



Service Update InkCenter

Revised 03/29/2013
to suggest improvements or ask
follow up questions

whoekh@retailinkjet.com

Objective: Provide information on what is new with the Ink Center

TOTAL SERVICE CALL Addition

In addition to the other tests performed during a service call we would like the techs to start checking the rotary distribution valves for signs of leaks. If the valve leaks, it may drip ink on the infusion pump board.

The valve may leak from the weep port on the back left side of the valve, or out of the back of the valve. Ink on the 2 screws securing the valve may indicate a leak.

New Style Injectors

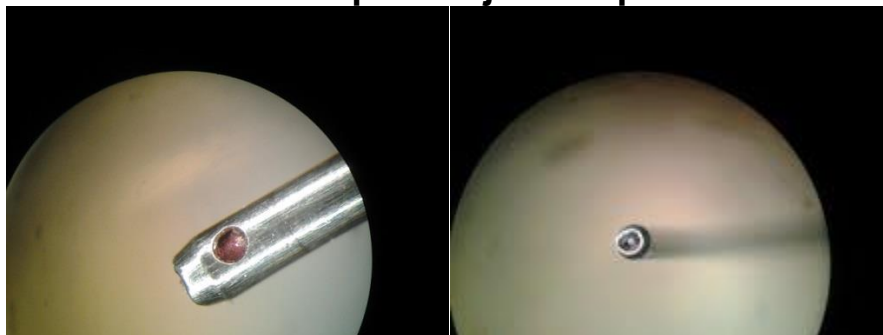
Most locations are now using the new style injector needles. The way to test these for proper flow is different from the old style. The old style you could run the injector under water and it would flow out the large hole in the tip. The NEW style has 2 smaller holes. To properly test the new style, block one of the holes with you finger to check the flow of the other hole. Repeat for the other hole.

NOTE: Improper use of the new style injectors will cause the tip to collapse. When checking injectors the integrity of the tip needs to be inspected also. See images below for examples:

Good Injector tip



Collapsed Injector tip



Inkjet411 YouTube Video: Ink Refilling & Cartridge Care Tips – Everything you need to know:
<http://www.youtube.com/watch?v=XFM3ux-WJUg>